

Vita medication bins



The ABS injection moulded bins are mainly used in the Medicart to dispense medication but can also be used in all our other modular products.

The trays are a modular, orderly and ergonomic solution to the general management of your medication distribution process.

They can be subdivided by means of dividers to cater for the various dispensing times per patient. The front of the tray comes with a space to insert a label into.

Our medication distribution trays have been designed to fit individual bins per patient and to cater for the various dispensing times a day.



» Label holder in front

At the front there is space in the ergonomic handle to place a label. The holder clicks easily open so that the label can easily be placed and replaced.



» Easy to subdivide

The bins are equipped with a sliding system in which the ABS dividers fit. The dividers are continuously adjustable so that the bins can be optimally subdivided per application time.

The dividers are beveled at the bottom so that taking the medication out is considerably simplified.



» Modular use

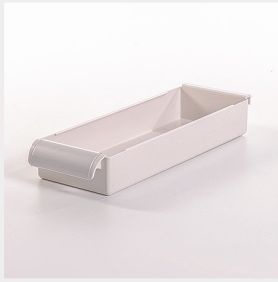
The dimensions of the bins are such that, depending on the type, an ISO tray can accommodate 3, 4 or 6 T-clear bins.

» Vita medication bins



» Vita medication bins small

Article Number	Description	Number of bins / tray	Ext. Dimensions
15011 00068	Bin	6	3 1/2 x 15 x 2 1/4 inch
15011 00069	Divider	-	-
15011 00085	Label holder small		2 1/2 inch



» Vita medication bins large

Article Number	Description	Number of bins / tray	Ext. Dimensions
15011 00066	Bin	4	5 1/4 x 15 x 2 1/4 inch
15011 00067	Divider	-	-
15011 00078	Label holder large		4 inch



» Tray for Vita medication bins

Article Number	Description	Ext. Dimensions
14001 00037	Tray for use in liners	24 x16 inch
19020 00113	Tray for use in Medcart Drawers	24 x16 inch

Standard article (non-standard articles have a longer delivery time)